
PC24(WT22) Air Pressure Sensor



- Piezoresistive silicon chip employed
- CE certificate
- Without temperature compensation

PC24(WT22) pressure sensor is suitable for dry and non-corrosive air measuring. It is easy for mounting with PCB. It is a solution for low cost application with low requirements.

Medical application

- Hospital and portable ventilator
- Oxygen concentrators and O₂ Therapy
- Sleep apnea
- Operating room

Industrial application

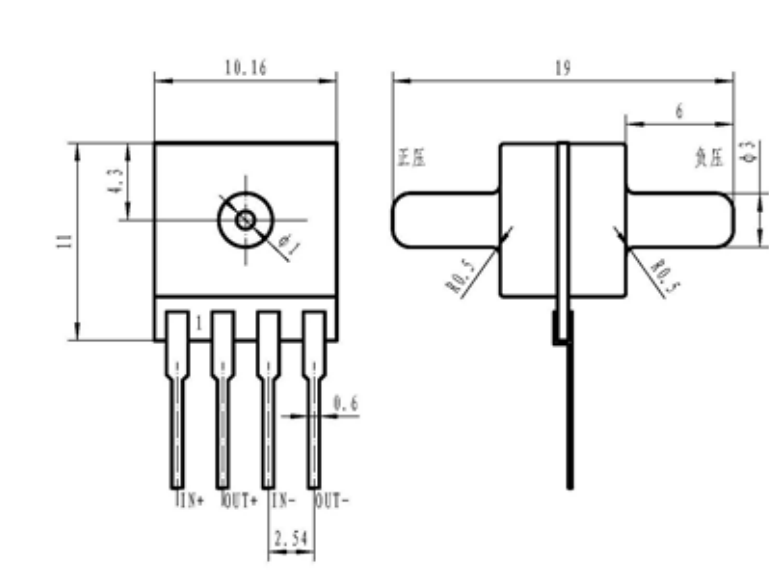
- Environmental
- Technology
- Manufacturing

HVAC application

Heating Ventilating and Air Conditioni

Pressure range			
Pressure range	100Pa, 1kPa, 2kPa, 7kPa, 10kPa, 35kPa, 70kPa, 100kPa(bar and psi unit available)		
Pressure reference	Gauge pressure Differential pressure		
Overpressure	300%F.S.		
Output signal			
Output	≥50mV(typical)		
Specification			
Accuracy (linearity, repeatability and hysteresis)	±0.25%F.S. (Typical)		
Excitation	1.5mA (Typical) 5VDC		
Compensated temp.	Without temperature compensation		
Operating temp.	0-60°C		
Storage temp.	0-85°C		
Bridge resistance	Min.	Max.	Unit
	2600	5500	ohm
Long term stability	≤0.2%F.S./year		
Housing	Plastic		
Weight	5g(approx)		

Mechanical drawing



In mm

How to order

PC24(WT22) XX—XX—XX

Pressure range

Please write directly

Pressure reference

G: gauge pressure

D: differential pressure

Excitation

C1: 1.5mA

C2: 5V